

August 29, 2006

TO: Cindy Castillo,
Director, Financial Aid

FROM: Andrew LaManque,
De Anza Research

SUBJECT: August 2006 FAFSA Applicant Transportation Survey

A survey of 2007 De Anza College FAFSA applicants was conducted during the last from August 24 - 28. 5,137 students were successfully sent emails, with 1,079 students completing the survey online (21% response rate).

The location of respondents by zip code matched closely with the original sample. As noted in the table below, FAFSA students without email addresses on file were more likely to be from the East San Jose zip code grouping (which includes Milpitas and Fremont) than the sample. The overall student population has less students from the East San Jose zip code grouping than found in the FAFSA population (roughly, 40% versus 50%).

Important highlights include:

- 80% of students responded that they drove to campus.
- 64% of students indicated that the cost of transportation / gas has made them think about going to a college closer to home.
- 50% survey respondents indicated De Anza College's reputation was the primary reason they took classes at De Anza.
- 54% of students indicated they would apply for a free bus pass if it was available.

De Anza College FAFSA Applicant Transportation Survey

29-Aug-06

		N	Percent
Q1 How do you get to the college most of the time?	I drive	861	80%
	I get a ride	85	8%
	I take the bus	115	11%
	I walk or bike	16	1%
Total		1,077	100%

		N	Percent
Q2 How many days a week do you come to campus?	1 day a week	36	3%
	2 days a week	98	9%
	3 days a week	112	10%
	4 days a week	355	33%
	5 days a week	474	44%
Total		1,075	100%

		N	Percent
Q3 On a typical day, how long does it take you to get to campus?	less than 30 minutes	567	53%
	31-45 minutes	363	34%
	45-60 minutes	78	7%
	over an hour	65	6%
Total		1,073	100%

		N	Percent
Q4 Once you are on campus, how long do you stay?	1 hour	17	2%
	2-4 hours	456	43%
	5-7 hours	489	46%
	8 hours or more	110	10%
Total		1,072	100%

		N	Percent
Q5 What is your zip code?	San Jose East of 880, Alviso, Milpitas, Fremont, Union City, Newark, Hayward, East Palo Alto	570	53%
	San Jose Other, Santa Clara, Morgan Hill, Gilroy, Campbell, Sunnyvale (94086, 94089)	300	28%
	Cupertino, Sunnyvale (94087), Los Altos, Mountain View, Palo Alto, Los Gatos, Saratoga	155	14%
	All Other Areas	54	5%
Total		1,079	100%

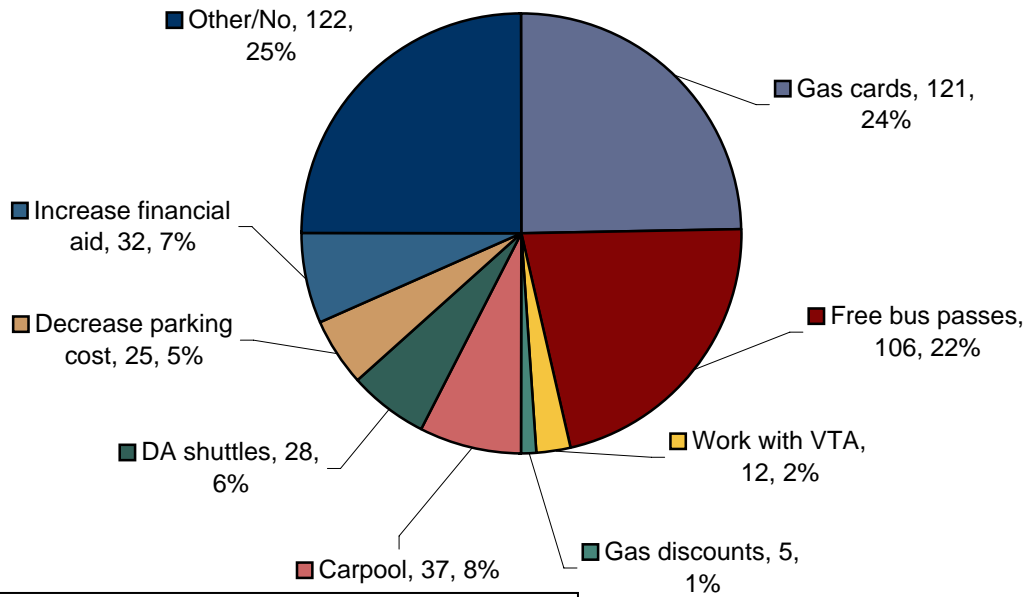
		N	Percent
Q6 About how much do you spend per week on transportation to De Anza?	\$0-\$10	95	9%
	\$11-\$20	317	30%
	\$21-\$50	511	48%
	\$51 or more	150	14%
Total		1,073	100%

		N	Percent
Q7 Has the cost of gas / transportation made you think about going to a college closer to home?	Yes	689	64%
	No	382	36%
Total		1,071	100%

		N	Percent
Q8 What is the primary reason you take classes at De Anza College?	because of its reputation	533	50%
	specific programs like Auto Technology and Nursing	224	21%
	to save money on housing and tuition	155	14%
	its close to home	111	10%
	my friends go to De Anza	46	4%
Total		1,069	100%

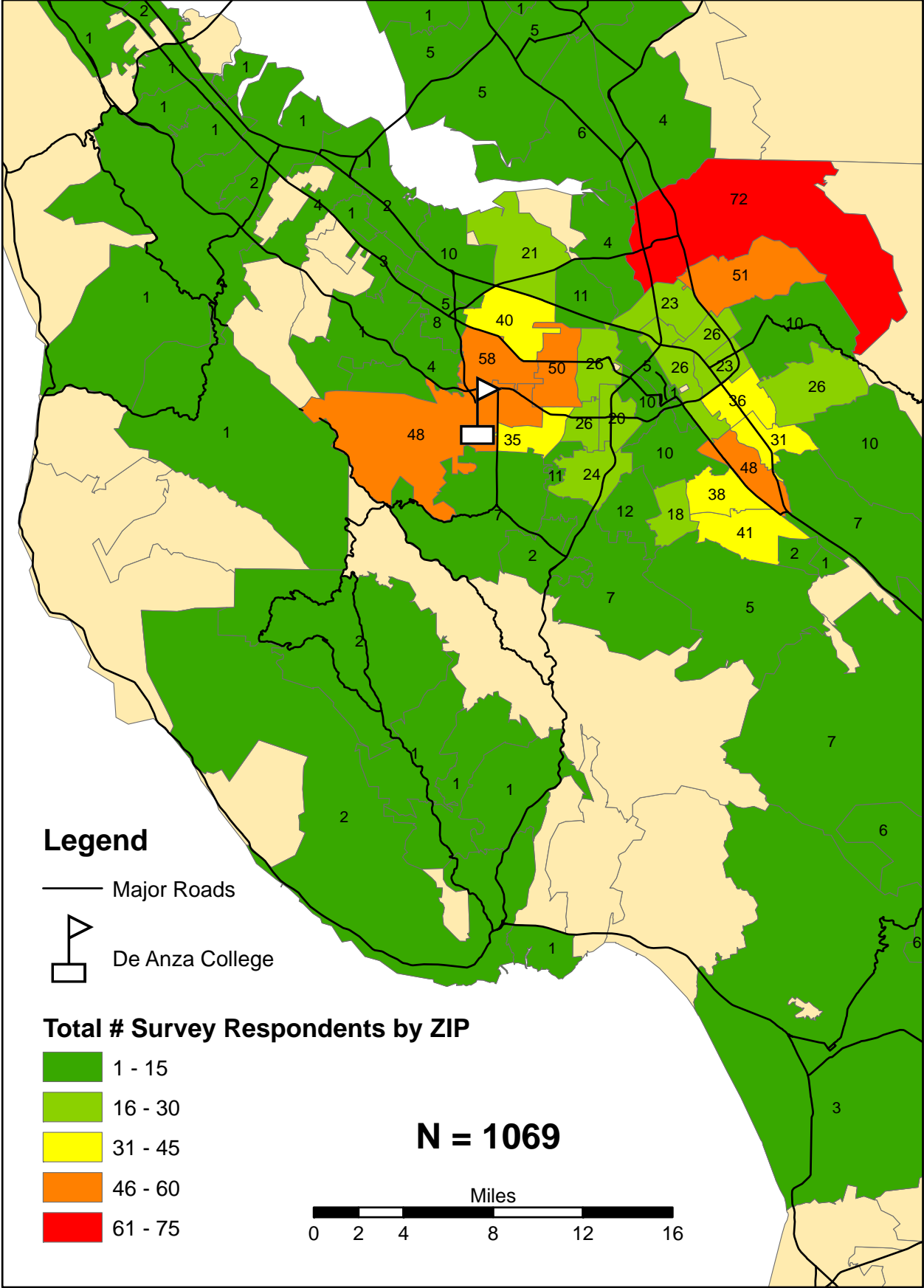
		N	Percent
Q9 If the financial aid office offered a limited number of FREE monthly bus passes, would you apply?	Yes	582	54%
	No	487	46%
Total		1,069	100%

Student Transportation Suggestions De Anza College, Summer 2006

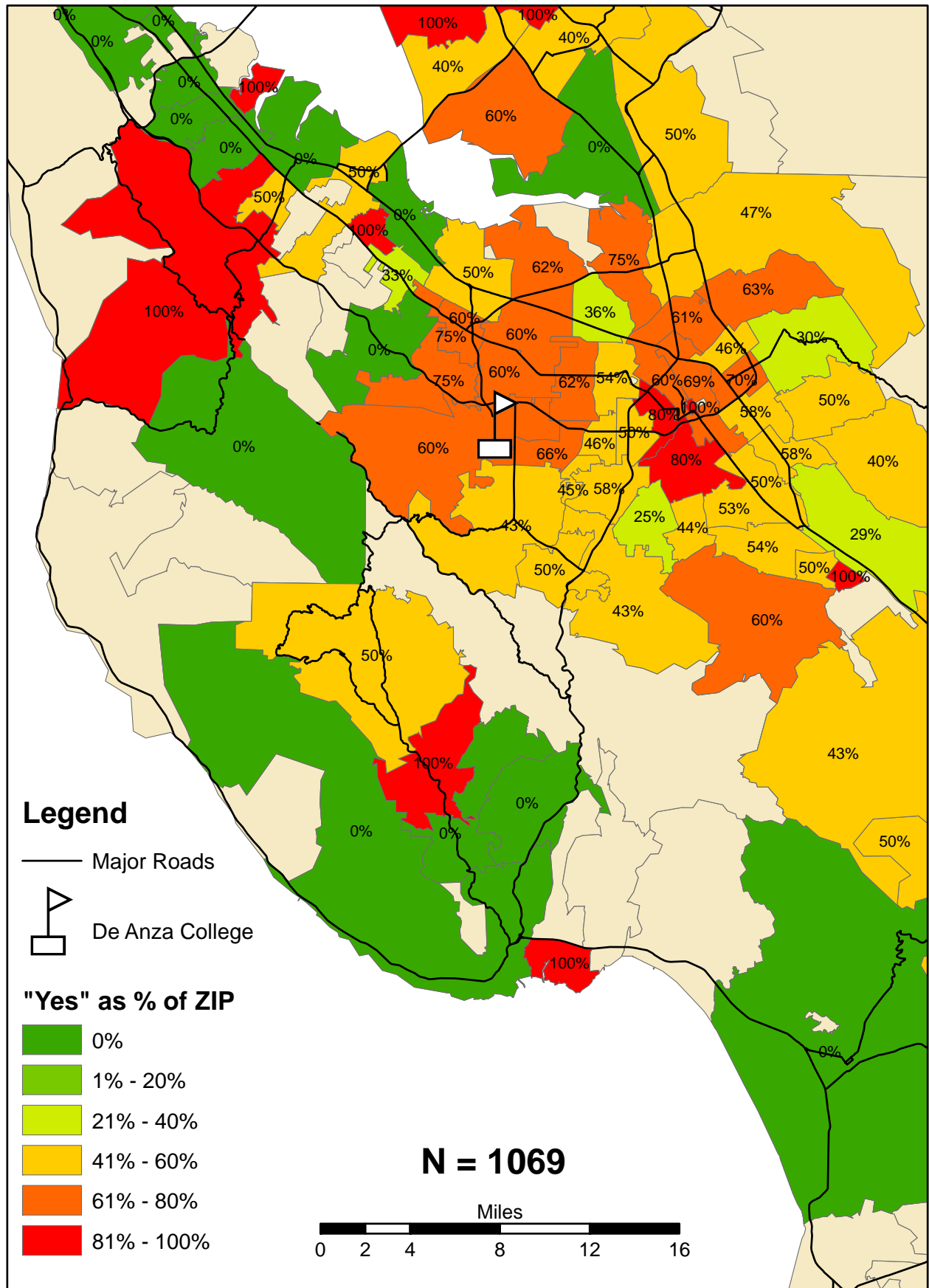


450 students responded, with 488 suggestions

Total Respondents to FAFSA Bus Survey by ZIP Code



Percent of FAFSA Bus Survey Respondents Indicating That They Would Apply for Free Bus Pass



De Anza FAFSA Applicants 2007 as of Aug 22 2006

	<u>Email Available</u>		<u>Survey Respondents</u>		<u>No Email - Not</u>	
	<u>Included in Sample</u>				<u>Surveyed</u>	
	<u>HC</u>	<u>Percent</u>	<u>HC</u>	<u>Percent</u>	<u>HC</u>	<u>Percent</u>
San Jose East of 880, Alviso, Milpitas, Fremont, Union City, Newark, Hayward, East Palo Alto	2,839	53%	570	53%	624	63%
San Jose Other, Santa Clara, Morgan Hill, Gilroy, Campbell, Sunnyvale (94086, 94089)	1,418	26%	300	28%	161	16%
Cupertino, Sunnyvale (94087), Los Altos, Mountain View, Palo Alto, Los Gatos, Saratoga	716	13%	155	14%	50	5%
All Other Areas	391	7%	54	5%	160	16%
Total	5,364	100%	1,079	100%	995	100%

Note: 227 emails bounced back or were not valid, total sample was 5,137.

Subject: De Anza Transportation Survey

From: De Anza College <DeAnzaCollege@saturn.deanza.fhda.edu>

Date: Thu, 24 Aug 2006 13:53:52 -0700

To: Bradley Creamer <creambradley@fhda.edu>



Hi Bradley,

The Financial Aid Office at De Anza College needs your feedback!

This survey has been sent to students selecting De Anza College on the FAFSA. Included below is a link to a short, 10-question survey about the cost of getting to campus. The Financial Aid Office is interested in your input so that it can improve its services.

Please take a few minutes to complete the survey and then **enter into the drawing for a free gas card (we are giving away 50, \$10 cards)!**

www.research.fhda.edu/cgi-bin/rws3.pl?FORM=buspass

Thank you for participating.

Questions can be addressed to:

[Andrew LaManque, Ph.D.](#)

De Anza Research.

Thank you!

De Anza College Research

Webmaster Message:

Do not reply to this e-mail.

Use the contact information provided above. For information about this message, check out:

[E-mail Communication](#)

Hotmail and Yahoo! users, make sure we are in your "Safe List". See your Hotmail or Yahoo! options for more information.

Average Daily Boardings

Average Weekday Boardings & Alightings for VTA Bus Routes Serving DeAnza

8/17/2006

Bus		On	Off
Line	Stop Name		
Downtown San Jose	23 STEVENS CREEK & MARY	40	69
Downtown San Jose	23 STEVENS CREEK & STELLING	61	289
Downtown San Jose	23 STEVENS CREEK & MARY	78	40
Downtown San Jose	23 STEVENS CREEK & STELLING	362	60
		540	457
East San Jose	25 STELLING & PEPPER TREE	0	38
East San Jose	25 STELLING & PEPPER TREE	18	1
East San Jose	25 STELLING & MCCLELLAN	2	19
East San Jose	25 MCCLELLAN & STELLING	8	6
East San Jose	25 STEVENS CREEK & STELLING	5	20
East San Jose	25 STELLING & STEVENS CREEK	100	3
		133	87
Westgate to Sunnyvale	53 STELLING & STEVENS CREEK	61	8
Westgate to Sunnyvale	53 STEVENS CREEK & MARY	5	4
Westgate to Sunnyvale	53 STEVENS CREEK & STELLING	3	67
Westgate to Sunnyvale	53 STEVENS CREEK & MARY	6	9
		75	87
West Valley College	54 STELLING & PEPPER TREE	7	16
West Valley College	54 STELLING & PEPPER TREE	7	12
West Valley College	54 STELLING & MCCLELLAN	5	3
West Valley College	54 MCCLELLAN & STELLING	8	11
West Valley College	54 STELLING & STEVENS CREEK	21	76
West Valley College	54 STELLING & STEVENS CREEK	60	3
West Valley College	54 STELLING & STEVENS CREEK	50	33
West Valley College	54 STELLING & STEVENS CREEK	12	15
		168	167
Great America to De Anza	55 STELLING & PEPPER TREE	0	0
Great America to De Anza	55 MCCLELLAN & STELLING	7	1
Great America to De Anza	55 STELLING & STEVENS CREEK	101	114
		108	115

	On	% Total	Off	% Total
Downtown San Jose	540	53%	457	50%
East San Jose	133	13%	87	10%
Westgate to Sunnyvale Caltrans	75	7%	87	10%
West Valley College to Sunnyvale Fair Oaks Ave	168	16%	167	18%
Great America to De Anza	108	11%	115	13%
Total	1,025	100%	914	100%

Source: David Lopez, VTA; David.Lopez@vta.org